

# 10 Years of LCFF

## Taking Stock and Looking to the Future

PACE Annual Conference  
Feb 3, 2023



# Panelists



Moderated by:  
Samantha Tran,  
Executive Director,  
California Policy  
Collaborative



Ted Lempert,  
President, Children  
Now, and Advisory  
Board Member, PACE



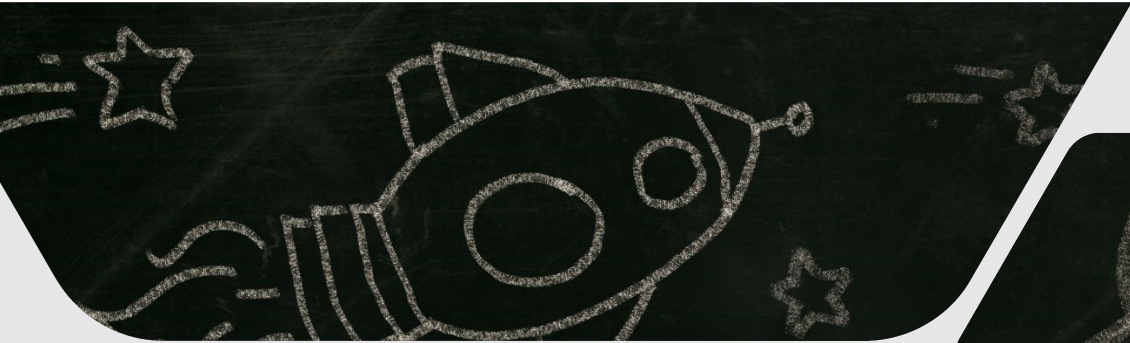
Rucker Johnson,  
Chancellor's  
Professor of Public  
Policy, Goldman  
School of Public  
Policy, University of  
California, Berkeley



Daniel Humphrey, LCFF  
Research Collaborative



Brooks Allen, Executive  
Director, California  
State Board of  
Education, and  
Education Policy  
Advisor, Office of  
California Governor  
Gavin Newsom

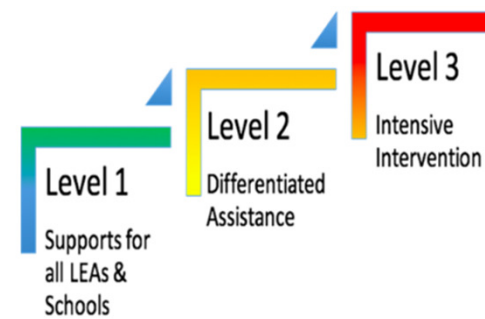
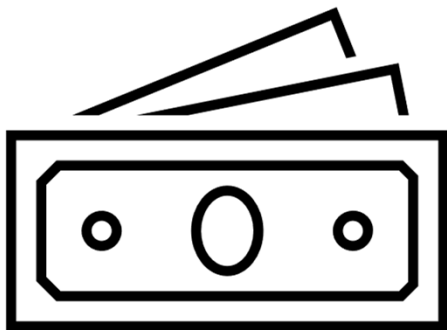


Local Control  
Funding Formula



- Local Control
- Equity
- Community Engagement
- Accountability





# 10 Years of LCFF

## Taking Stock and Looking to the Future

PACE Annual Conference  
Feb 3, 2023



# The Anatomy of School Spending Effectiveness

GOING BEYOND WHETHER MONEY MATTERS  
TOWARD 'HOW', 'WHY', 'WHEN', 'FOR WHOM', & 'WHICH TYPES'?  
NEW EVIDENCE FROM CALIFORNIA'S LOCAL CONTROL FUNDING FORMULA

**Rucker C. Johnson, UC-Berkeley & NBER**  
**February 3, 2022**

Grateful for data partnership with California Dept of Education, and generous support from LPI, PACE, William T. Grant Foundation, UC-Berkeley Population Center/NIH, & California Policy Lab

# What Do we Know After 10 Years of LCFF? What's Next?

Daniel C. Humphrey  
& Julia Koppich



Get access to a dozen research reports:

<https://edpolicyinca.org/initiatives/lcff-research-collaborative>



# Local Control Funding Formula Research Collaborative (LCFFRC)



- ▶ Began in 2014
- ▶ Reports:
  - ▶ Initial and subsequent LCFF implementation
  - ▶ Special foci on equity and coherence, stakeholder engagement, foster youth, early learning
  - ▶ *Complete reports available on PACE website*

# New Funding Formula and Stakeholder Engagement

## ▶ \$\$s

- ▶ Foundation: Equity
- ▶ Base funding plus supplemental and concentration grants for low-income students, English learners, foster and homeless youth

## ▶ Engagement

- ▶ Decisions about priorities and resource allocation through stakeholder engagement
- ▶ Ongoing challenge for districts
- ▶ Where's the "local" in Local Control?

# LCAPs and COEs

## ▶ LCAPs

- ▶ Fiscal strategic blueprint
- ▶ Multiple purposes, multiple revisions
- ▶ Uneasy tension between local control and compliance

## ▶ COEs

- ▶ Expanded roles
- ▶ LCAP gatekeepers
- ▶ Often strains COE capacity



# System of Support and School Boards



## ▶ Accountability

- ▶ State System of Support
- ▶ Measures progress on multiple indicators
- ▶ State provides tiered support and assistance

## ▶ School Boards

- ▶ Legally required to approve LCAPs
- ▶ Involvement in engagement and LCAP development modest, at best

# What's Next for the LCFF? Seven Strategies in 7 Minutes

1. Smooth Out the Concentration Funds Cut-line for Fairness, Continuity, and Equity
2. Expand Target Groups and Add Duplicated Counts
3. Attend to Capacity Issues at the District and School Level



# Seven Strategies in 7 Minutes

4. Stop the Drift Away from Local Control
5. Include Students With Disabilities in the LCFF  
(and the Accountability and Support System)
6. Make Engagement Meaningful



# Seven Strategies in 7 Minutes

## 7. Look After Our Children, Grandchildren, and Their Children



# 10 Years of LCFF

## Taking Stock and Looking to the Future

PACE Annual Conference  
Feb 3, 2023

