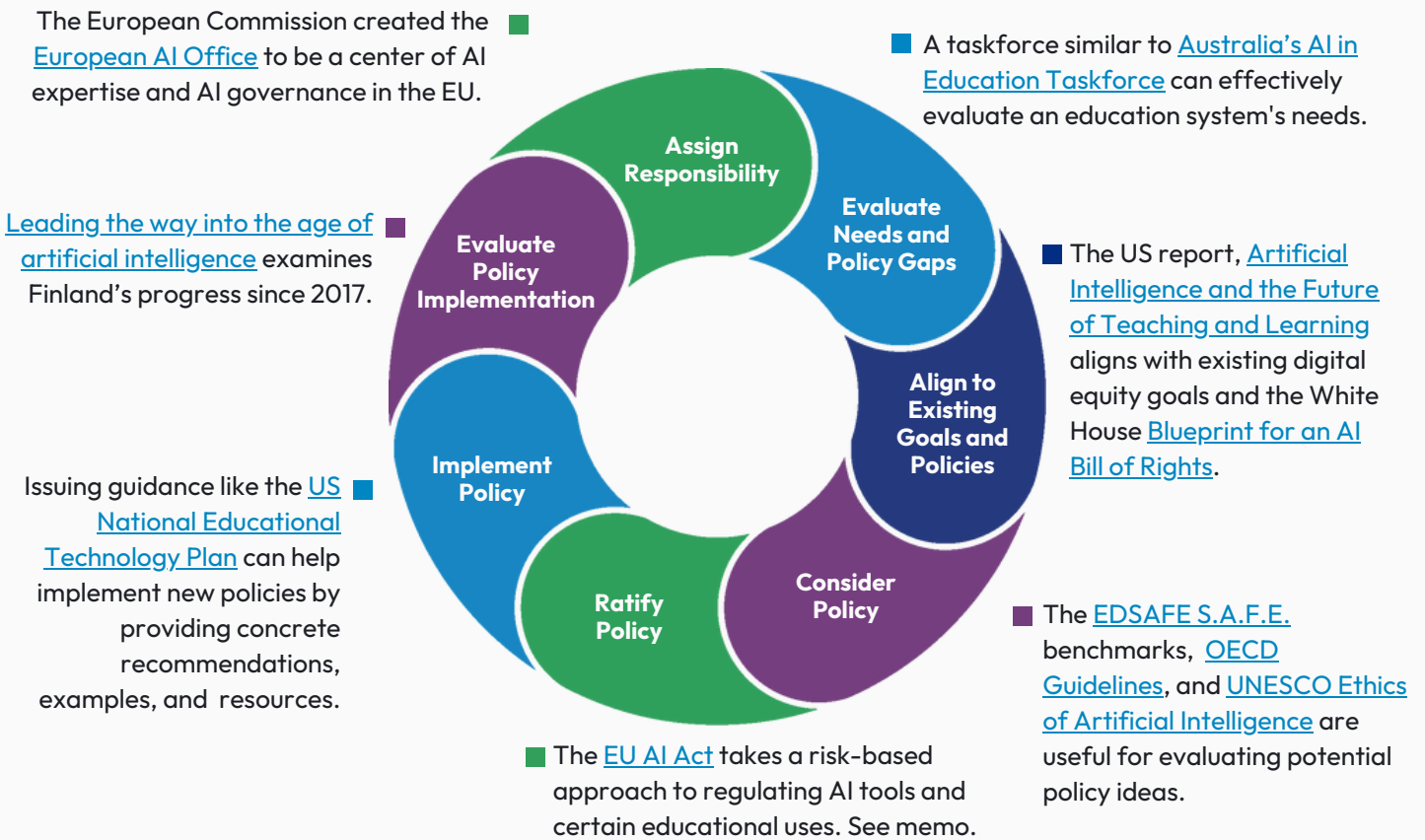


AI Policy Landscape

Global Policy and Guidance Examples

Policymakers should understand how current laws affect AI's educational uses and update or adopt policies to effectively balance AI's opportunities and risks. Here are examples aligned to various stages of policy development.



[Australia](#), [Japan](#), [New Zealand](#), [South Korea](#), the [United Kingdom](#), and the [United States](#) are some of the countries that have published dedicated guidance on AI in education.



TeachAI is led by Code.org, ETS, the International Society for Technology in Education, Khan Academy, and the World Economic Forum.

